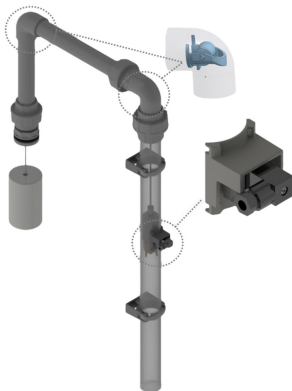


# BISTABLE SWITCH: BZE SET CABLE PULL / FLOAT LEVEL INDICATORS DATASHEET

## Characteristics

- Contactless level detection
- low investment costs
- Simple and quick assembly

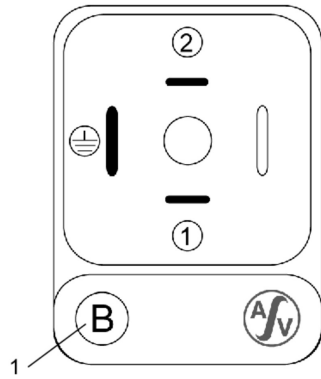


**Bistable switch: BZE set Cable pull / float level indicators**

<b>Application</b>	<ul style="list-style-type: none"><li>- The bistable switch is suitable e.g. for the cable pull or float level indicator for mounting on the indicator tube.</li><li>- The contact of the BZE switches depending on the position of the trigger element (counterweight/float). Typical applications are limit value detection or 2-point control (min /max control) on containers.</li><li>- Each level switching point requires a BZE. Any number of switching points can be added.</li></ul>
<b>Function</b>	<ul style="list-style-type: none"><li>- The BZE changes its contact when the counterweight is at the same height as the BZE.</li><li>- If the counterweight is above the BZE, the contact of the BZE is closed, below the BZE the contact is open.</li></ul>
<b>Material housing (not in contact with the medium)</b>	<ul style="list-style-type: none"><li>- ABS</li></ul>
<b>Housing material (with medium contact)</b>	<ul style="list-style-type: none"><li>- ABS</li></ul>
<b>Switching function</b>	<ul style="list-style-type: none"><li>- Reed switch, magnetically actuated</li></ul>
<b>Operation Note</b>	<ul style="list-style-type: none"><li>- When mounting the bistable switch, make sure that the display matches the current position of the float/counterweight, otherwise there may be a false indication until the first over/under movement.</li></ul>
<b>Maintenance note</b>	<ul style="list-style-type: none"><li>- Maintenance-free when used as intended</li></ul>
<b>Ambient temperature in °C</b>	<ul style="list-style-type: none"><li>- -20°C ... +60°C</li></ul>
<b>Mounting position</b>	<ul style="list-style-type: none"><li>- vertical</li></ul>
<b>Assembly</b>	<ul style="list-style-type: none"><li>- The BZE pipe adapter is attached to the pipe of the cable pull or float level indicator at the corresponding height of the desired switching point by means of cable ties.</li></ul>
<b>Voltage</b>	<ul style="list-style-type: none"><li>- 0–230 V AC/DC, 50/60 Hz</li></ul>
<b>Type of protection</b>	<ul style="list-style-type: none"><li>- IP 65 with mounted connector plug</li></ul>
<b>Electrical switching capacity</b>	<ul style="list-style-type: none"><li>- 0.5 A (max.)</li></ul>
<b>Connection cable</b>	<ul style="list-style-type: none"><li>- Cable outside diameter: 4–6 mm</li><li>- nominal cross-section: 1.5 mm<sup>2</sup></li></ul>
<b>Approvals</b>	<ul style="list-style-type: none"><li>- CE mark according to Low Voltage Directive 2006/95/EC and EMC Directive RL (89/336 /EC).</li></ul>
<b>Accessories</b>	<ul style="list-style-type: none"><li>- Float level indicator</li><li>- tubes</li></ul>

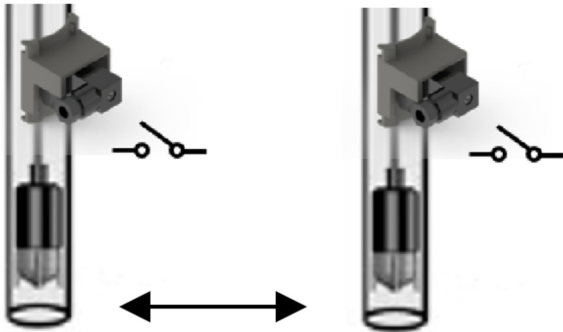
## Bistable switch: BZE set Cable pull / float level indicators

### Electrical connection



1 = "B" bistable

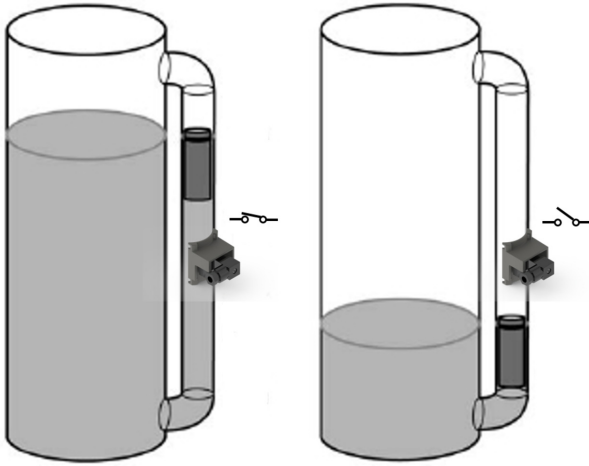
### Switching and mounting distances



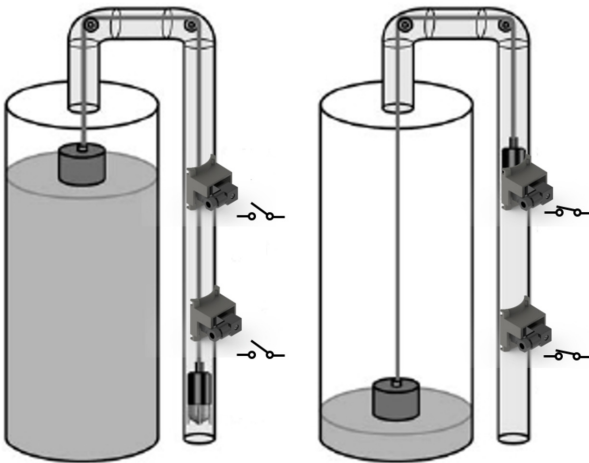
$d \geq 200\text{mm}$

## Bistable switch: BZE set Cable pull / float level indicators

### Application example float level indicator

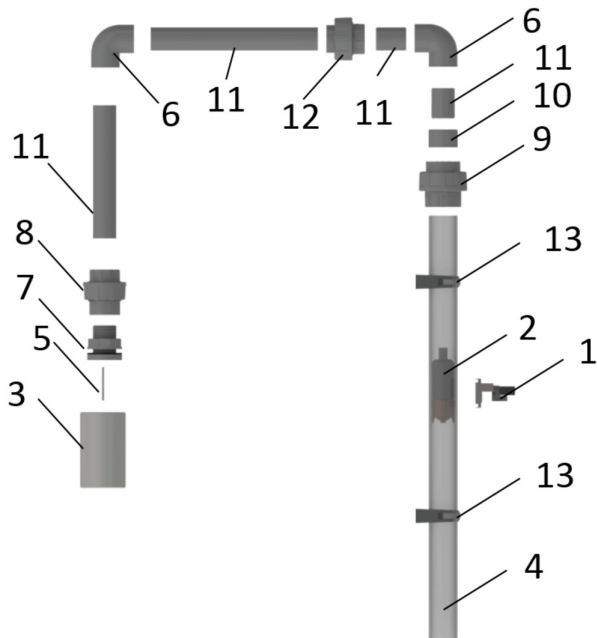


### Application example pull-wire level indicator



## Bistable switch: BZE set Cable pull / float level indicators

### Mounting example set BZE



quantity	Item number	designation
1	243599	BZE - Sensor
2	139512	Counterweight
3	140822	Float
4	-	PVC clear d50
5	140200	PP rope
6	244300	90°angle with roller, PVC-U
7	141757	Tank screw connection d25, PVC-U
8	532380800	Fitting PVC d40 female thread 1¼"-EPDM
9	532280800	Screw connection d50, PVC-U
10	535181112	Reducer d50/d40, PVC-U
11	-	PVC-U d40
12	532270800	Fitting d40, PVC-U
13	41574	Pipe clamps d50

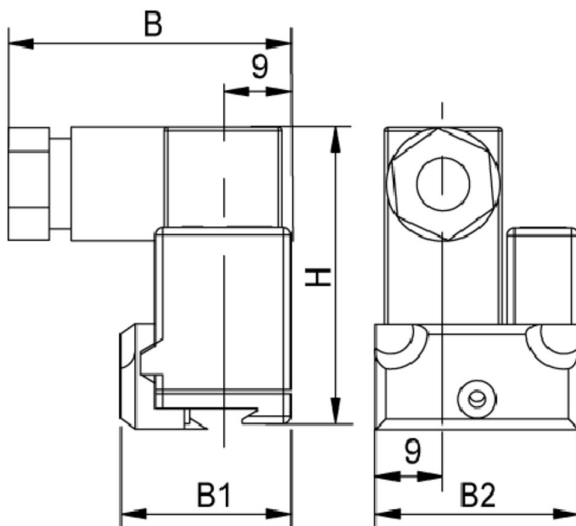
## Bistable switch: BZE set Cable pull / float level indicators

### Contents BSZ - Set:

quantity	Item number	designation
1	243599	BZE - Sensor
1	139512	Counterweight
1	140822	Float
10m	140200	PP rope
2	244300	90°angle with roller, PVC-U
1	141757	Tank screw connection d25, PVC-U
1	532380800	Fitting PVC d40 female thread 1¼"-EPDM
1	532280800	Screw connection d50, PVC-U
1	535181112	Reducer d50/d40, PVC-U
1	532270800	Fitting d40, PVC-U
3	41574	Pipe clamps d50

\*d40 and d50 tube is not included in the set!

### Dimensioned drawing



designation	Dimension
1	37,5
2	22,6
3	27
4	40

all dimensions in mm / \* in inch