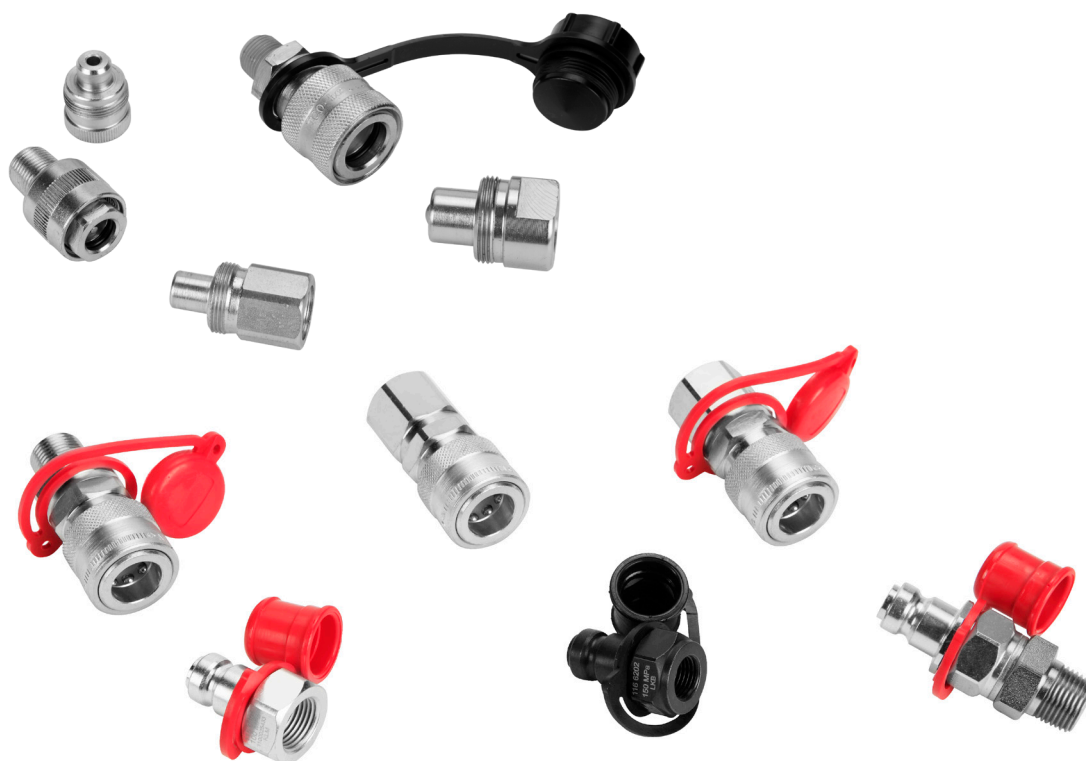


HYDRAULIC COUPLERS



- ✓ Low flow and high flow couplers, from 6 to 40 litres/min.
- ✓ 700 and 1.000 bar couplers have 3/8"-18 NPT thread. 1.500 bar couplers have 1/4"-BSP thread.
- ✓ Male and Female couplers can be supplied separately.
- ✓ Steel dust cup available for AZ3120, AZ3140 and AZ3141 couplers.
- ✓ AZ3321, AZ3322, AZ3324, AZ3325, AZ3341, AZ3344 and AZ3345: ball quick couplers to guarantee easy and quick connection.
- ✓ AZ3120, AZ3140 and AZ3141: standard high flow couplers.
- ✓ AZ3220 and AZ3240: low flow couplers. Only used in Maintenance Sets.
- ✓ All standard cylinders are supplied with AZ3140 female coupler.
- ✓ All cutters are supplied with AZ3321 male ball coupler.



WARNING

**Never disconnect the hose when the system is pressurized.
Never exceed the maximum working pressure of the hose.**



Apply 2 rounds of Teflon around all 3/8" NPT threads of the system, in the thread direction, leaving the first thread uncovered to prevent the tape breaking and entering the hydraulic system. Torque: 80 Nm.



HYDRAULIC COUPLERS



Type

AZ3

Capacity

6 - 40 l/min

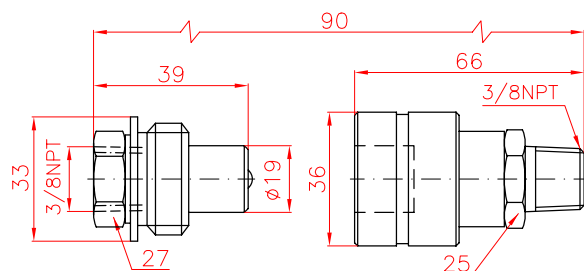
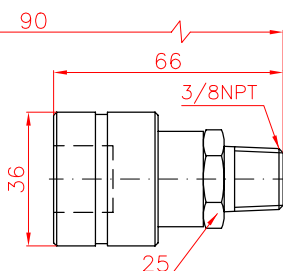
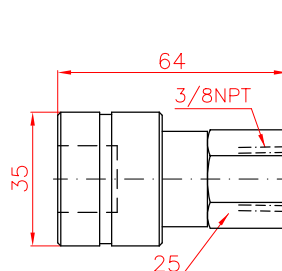
Max. pressure

700 - 1.500 bar

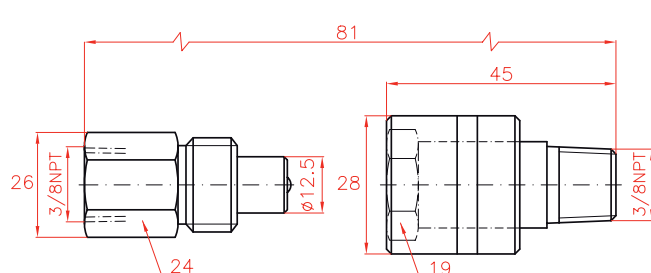
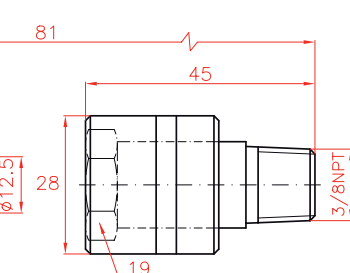
Steel dust cup available:

AZ3144 for female couplers **AZ3140** and **AZ3141**
AZ3124 for male coupler **AZ3120**
Plastic dust cup **AZ3103** availableto suit **AZ3120**, **AZ3140** and **AZ3141** couplers

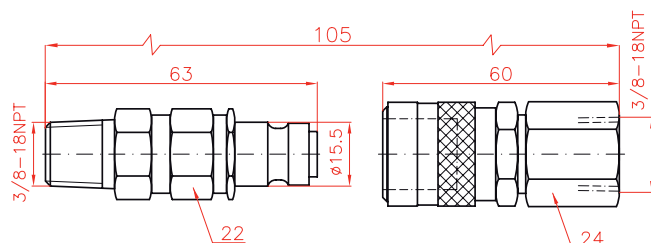
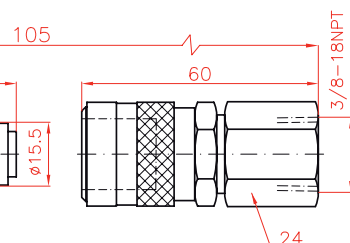
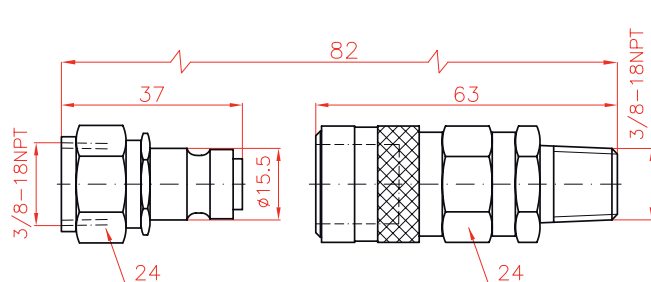
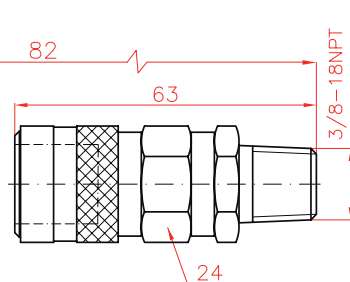
HIGH FLOW COUPLERS 700 BAR

AZ3120**AZ3140****AZ3141**

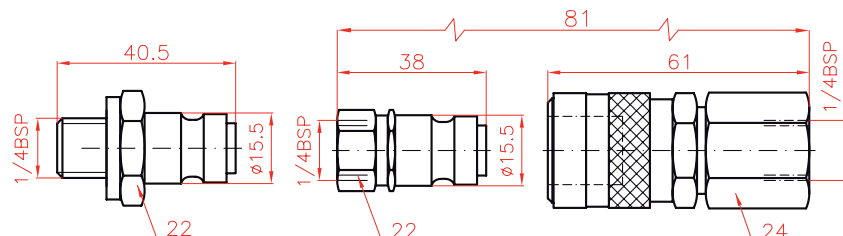
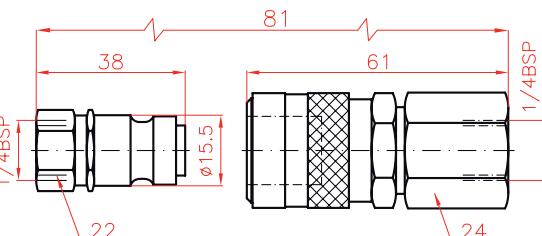
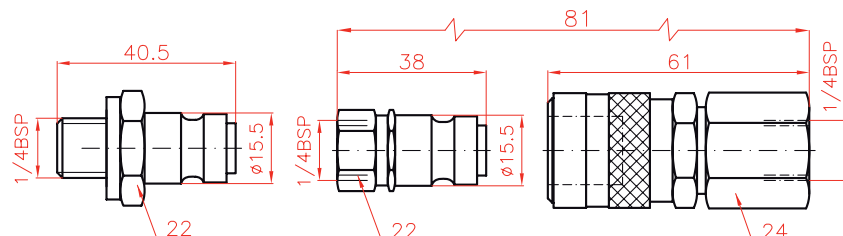
LOW FLOW COUPLERS 700 BAR

AZ3220**AZ3240**

1.000 BAR BALL COUPLERS

AZ3321**AZ3341****AZ3325****AZ3345**

1.500 BAR BALL COUPLERS

AZ3322**AZ3324****AZ3344**

Flow	Coupling	Model	Thread	Pressure
l/min		LARZEP		bar
40	Male	AZ3120	Female 3/8"NPT	700
	Female	AZ3140	Male 3/8"NPT	700
	Female	AZ3141	Female 3/8"NPT	700
7	Male	AZ3220	Female 3/8"NPT	700
	Female	AZ3240	Male 3/8"NPT	700
6	Male	AZ3321	Male 3/8"NPT	1.000
	Male	AZ3325	Female 3/8"NPT	1.000
	Female	AZ3341	Female 3/8"NPT	1.000
	Female	AZ3345	Male 3/8"NPT	1.000
6	Male	AZ3322	Male 1/4"BSP*	1.500
	Male	AZ3324	Female 1/4"BSP*	1.500
	Female	AZ3344	Female 1/4"BSP*	1.500

*Cone 120°

Ref. AZ3322 without valve.